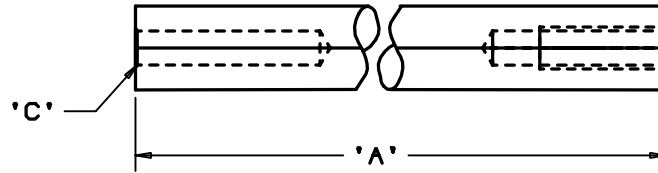
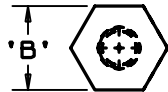


THIS COPY IS PROVIDED ON A RESTRICTED BASIS AND IS NOT TO BE USED IN ANY WAY DETRIMENTAL TO THE INTERESTS OF PANDUIT CORP.

PANDUIT PART No.	'A'	'B'	'C' DIA
HB2SP19	2.00 (50.8)	0.50 (12.7)	0.20 (5.2)
HB2SP25	4.00 (101.6)		0.300 (7.5)

NOTES:  
1. SEE CURRENT PRICE SHEET FOR PART NUMBER SUFFIX DESIGNATION FOR PACKAGE SIZE.



M6 X 1.0 X 3/4" DEEP TAPPED HOLE (REF)

DIMENSIONS IN BRACKETS ARE METRIC (mm)

CAD FILENAME/LAYERS

GB0381BA\_PB\_HBSP\_05

**PANDUIT**

CORP. TINLEY PARK, ILLINOIS

HBSP  
HARNESS BOARD STANDOFF POST

UNLESS OTHERWISE SPECIFIED,  
DIMENSIONAL TOLERANCES ARE:  
(.X) ±0.05 (1.3) (.XXX) ±0.010 (0.25)  
(.XX) ±0.02 (0.5) ANGLES ± 5°

UNLESS OTHERWISE SPECIFIED,  
ALL DIMENSIONS ARE GIVEN  
IN INCHES, THIRD ANGLE PROJECTION.

SCALE FULL

DRAWN BY KLN  
DATE 7/06/93  
CHK'D

MAT'L:  
2011-T3  
ALUM. 1/2"  
HEX STOCK

DRAWING NO.  
GB0381BA

DWG  
SIZE  
A

REV	DATE	BY	CHK	DESCRIPTION	ECN	R	CUST	SUP
5	2/11/03	LGG		DELETED HB6SP19, HB4SP19, & 25 ADDED HB2SP25 BACK TO DRAWING	GB0381BA	5		
4	6/28/01	LGG		ADDED REF.	GB0381BA	4		
3	5-25-01	LGG		REMOVED HB6SP25	GB0381BA	3		
2	12-14-00	CGSM		REMOVED HB2SP25	GB0381BA	2		
1	4/04/85	DWP		REVISED TAPPED HOLE SIZE TO METRIC	GB0381BA	1		
R	7/06/93	KLN		INITIAL RELEASE	GB0381BA	R		